

A.	System Overview
B1.	Cable Ties
B2.	Cable Accessories
B3.	Stainless Steel Cable Ties & Accessories
C1.	Wiring Duct
C2.	Abrasion Protection
C3.	Cable Management
D1.	Terminals
D2.	Power Connectors
D3.	Grounding Connectors
E1.	Labeling Systems
E2.	Labels
E3.	Pre-Printed & Write-On Markers
E4.	Permanent Identification
E5.	Lockout/Tagout & Safety Solutions
F.	Keystone Cabling Systems
G.	Part Number Index

Compression Connectors

Panduit® Pan-Lug™ Compression Connectors provide permanent terminations for a variety of power and grounding applications, with innovation, highest reliability, and lowest installed cost. Panduit offers the first and only copper compression lugs and splices that meet Network Equipment-Building Systems (NEBS) Level 3 requirements as tested by Telcordia Technologies. NEBS Level 3 assures that product performance is suitable for equipment applications that demand minimal service interruptions over the life span of the equipment.



- Functional product information is marked directly on the connector, facilitating the identification, ordering, and usage of the compression connector**
- Color-coded to facilitate quick identification of the proper crimping die**
- Made from high strength, high conductivity electrolytic copper and aluminum alloy materials to provide optimum connectivity for power and grounding applications**
- UL Listed or Recognized, CSA Certified, ABS Type Approved and tested by Telcordia – meets NEBS Level 3, as noted**
- Terminations using Panduit® Pan-Lug™ Compression Connectors are also UL Listed and CSA Certified with specified competitor tools**
- Wide assortment of manual, controlled cycle, battery operated hydraulic and pneumatic crimping tools for reliable connections at the lowest installed cost**

Panduit® Pan-Lug™ Compression Connectors are designed for use with many different code and flex conductor types and are available in a broad range of styles and sizes including copper one-hole, two-hole, and blank tongue lugs and splices; aluminum one-hole and two-hole lugs and splices; and copper in-line reducing splices. Panduit offers a wide assortment of Pan-Lug™ Power Connectors to meet customer needs and today's application requirements.

Features and Benefits – Pan-Lug™ Compression Connectors

Bolded> features are unique to Panduit.

<h3>Copper Lugs</h3> <p>Color-coded bands for proper die selection and crimp placement</p> <p>Easy-to-read, color-coded die index numbers for Panduit and specified competitor crimping dies for selection</p> <p>Made from seamless, high conductivity copper tubing and electro tin-plated and burnished to inhibit corrosion</p> <p>Internally beveled barrel end for easy conductor insertion (types LCCF and LCAF available with flared entry for flex conductor)</p> <p>Inspection windows available to assure complete conductor insertion</p> <p>Part number, stud size, and conductor size marked on part for easy identification</p> <p>UL LISTED CS CERTIFIED</p>	<h3>Flex Lugs</h3> <p>Color-coded bands for proper die selection and crimp placement</p> <p>Inspection window to assure complete conductor insertion</p> <p>Made from seamless, high conductivity copper tubing and electro tin-plated and burnished to inhibit corrosion</p> <p>Easy-to-read, color-coded die index numbers for Panduit and specified competitor crimping dies for selection</p> <p>Product information marked on part for easy identification</p> <p>Can be used with code conductor and flex conductor class: G, H, I, K, M and Diesel Locomotive</p> <p>UL LISTED CS CERTIFIED</p>
<h3>Narrow Tongue Lugs</h3> <p>Color-coded bands for proper die selection and crimp placement</p> <p>Inspection window to assure complete conductor insertion</p> <p>Easy-to-read, color-coded die index numbers for Panduit and specified competitor crimping dies for selection</p> <p>Made from seamless, high conductivity copper tubing and electro tin-plated and burnished to inhibit corrosion</p> <p>Narrow tongue width for limited space applications</p> <p>Product information marked on part for easy identification</p> <p>UL LISTED CS CERTIFIED</p>	<h3>Copper Metric Lugs</h3> <p>Internally beveled barrel ends for easy conductor insertion</p> <p>Product information marked on part for easy identification</p> <p>Inspection window to assure complete conductor insertion</p> <p>Made from 99.9% pure copper for high quality connection and tin-plated to inhibit corrosion</p> <p>UL LISTED CS CERTIFIED</p>
<h3>Copper Parallel Splice</h3> <p>Chamfered on both ends for fast and easy conductor insertion</p> <p>Made from seamless, high conductivity copper tubing and electro tin-plated and burnished to inhibit corrosion</p> <p>Intuitive part numbering for fast and accurate part selection in the field</p> <p>Industry recognized color-coding for selection</p> <p>Largest part marking in the industry – easier to read in low light conditions</p> <p>UL LISTED CS CERTIFIED</p>	<h3>Aluminum Lugs</h3> <p>Easy-to-read die index numbers for Panduit and specified competitor crimping dies for selection</p> <p>Part number and conductor size marked on part for easy identification</p> <p>Made from seamless wrought aluminum and electro tin-plated to inhibit corrosion</p> <p>Crimping areas marked on part for proper crimp placement</p> <p>Factory pre-filled with oxide inhibitor to prevent oxidation</p> <p>UL LISTED</p>

B1.
Cable
Ties

B2.
Cable
Accessories

B3.
Stainless
Steel Cable
Ties &
Accessories

C1.
Wiring
Duct

C2.
Abrasion
Protection

C3.
Cable
Management

D1.
Terminals

D2.
Power
Connectors

D3.
Grounding
Connectors

E1.
Labeling
Systems

E2.
Labels

E3.
Pre-Printed
&
Write-On
Markers

E4.
Permanent
Identification

E5.
Lockout/
Tagout &
Safety
Solutions

F.
Keystone
Cabling
Systems

G.
Part
Number
Index



Compression connector crimping tools speed installation and reduce total installed cost. Visit www.panduit.com/tools.



Panduit designs and manufactures a full line of labeling products, software and printers to assist you with your labeling requirements. See pages E1.1 – E2.27.







Heat shrink tubing provides an economical and easy way to insulate, protect, harness and color code electrical and electronic components. See pages C2.23 – C2.42.

Selection Guide – Pan-Lug™ Copper Compression Connectors for Copper Code Conductor



Code

Connector	Barrel Style	Type	Page Number
 <div>One-Hole Lugs</div>	Standard Barrel with Inspection Window	LCA	D2.9, D2.10
		LCAN narrow tongue	D2.11, D2.12
	Long Barrel no Inspection Window	LCB	D2.13, D2.14
 <div>Two-Hole Lugs</div>	Standard Barrel with Inspection Window	LCD	D2.15, D2.16, D2.17
		LCDN narrow tongue	D2.18
	Long Barrel no Inspection Window	LCC	D2.19, D2.20
		LCC-W	D2.21, D2.22, D2.23, D2.24
	Long Barrel with Inspection Window	LCCN-W narrow tongue	D2.25
 <div>Butt Splices</div>	Standard Barrel	SCS	D2.26
	Long Barrel	SCL	D2.27
 <div>Parallel Splices</div>		PSC	D2.28

Part Number System for Pan-Lug™ Compression Lugs

LCD

—
Type

2/0

—
Conductor
Size

—

38

—
Stud Hole
Size

D

—
Two Stud
Hole Spacing

F

—
Tongue Angle

—

X

—
Standard
Package Size

example:
LCD = Lug, Copper
Two-Hole
Standard Barrel

2/0 = 2/0 AWG

10 = #10

14 = 1/4"

56 = 5/16"

38 = 3/8"

12 = 1/2"

58 = 5/8"

34 = 3/4"

78 = 7/8"

00 = Blank Tongue

5 = M5

6 = M6

8 = M8

10 = M10

12 = M12

14 = M14

16 = M16

20 = M20

A = 0.625"

B = 0.750"

C = 0.875"

D = 1.0"

E = 1.25"

G = 1.5"

J = 0.5"

K = 2"

M = 1.375"

P = 0.688"

Q = 1.125"

No Letter = 1.75" or 44.5mm

CD = 22.0-25.0mm

H = 45°

F = 90°

No Letter = Straight

1 = 1

3 = 3

5 = 5

6 = 6

X = 10

E = 20

Q = 25

L = 50

C = 100



Code Conductor, Two-Hole, Standard Barrel with Window Lug

For Use with Stranded Copper Conductors

Type LCD

- Color-coded barrels marked with Panduit and specified competitor die index numbers for proper crimp die selection
- Inspection window to visually assure full conductor insertion
- Tin-plated to inhibit corrosion
- UL Listed and CSA Certified to 35 kV** and temperature rated to 90°C when crimped with Panduit and specified competitor crimping tools and dies
- UL Listed and CSA Certified for wide wire range-taking capability when crimped with Panduit® Uni-Die™ Dieless Crimping Tool‡
- Tested by Telcordia – meets NEBS Level 3
- American Bureau of Shipping approved
- Available with NEMA hole sizes and spacing
- Lugs available in 90 and 45 degree bent tongue. Please refer to www.panduit.com

B1.
Cable
Ties

B2.
Cable
Accessories

B3.
Stainless
Steel Cable
Ties &
Accessories

C1.
Wiring
Duct

C2.
Abrasion
Protection

C3.
Cable
Management

D1.
Terminals

D2.
Power
Connectors

D3.
Grounding
Connectors

E1.
Labeling
Systems

E2.
Labels

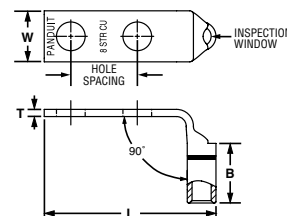
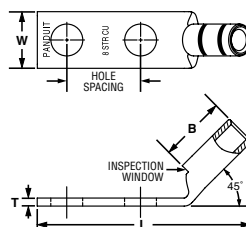
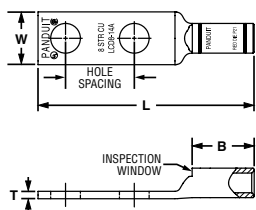
E3.
Pre-Printed
&
Write-On
Markers

E4.
Permanent
Identification

E5.
Lockout/
Tagout &
Safety
Solutions

F.
Keystone
Cabling
Systems

G.
Part
Number
Index



Part Number	Copper Conductor Size	Stud Hole Size (In.)	Stud Hole Spacing (In.)	Figure Dimensions (In.)				Panduit Color Code	Panduit Die Index No.‡	Burndy Die Index No.‡	T&B Die Index No.‡	Wire Strip Length (In.)	Std. Pkg. Qty.
				W	B	T	L						
LCD10-10A-L*	#14 – #10 AWG STR, #12 – #10 AWG SOL	#10	0.63	0.38	0.38	0.06	1.69	—	—	—	—	7/16	50
LCD10-14A-L*		1/4	0.63	0.42	0.38	0.05	1.78	—	—	—	—	7/16	50
LCD10-14B-L*		1/4	0.75	0.42	0.38	0.05	1.91	—	—	—	—	7/16	50
LCD10-14D-L*		1/4	1.00	0.42	0.38	0.05	2.16	—	—	—	—	7/16	50
LCD10-38D-L*	#8 AWG	3/8	1.00	0.56	0.38	0.04	2.38	—	—	—	—	7/16	50
LCD8-10A-L		#10	0.63	0.41	0.56	0.08	1.88	Red	P21	49	21	5/8	50
LCD8-14A-L		1/4	0.63	0.48	0.56	0.07	1.97	Red	P21	49	21	5/8	50
LCD8-14B-L		1/4	0.75	0.48	0.56	0.07	2.09	Red	P21	49	21	5/8	50
LCD8-14D-L		1/4	1.00	0.48	0.56	0.07	2.34	Red	P21	49	21	5/8	50
LCD8-38D-L		3/8	1.00	0.60	0.56	0.05	2.56	Red	P21	49	21	5/8	50
LCD6-10A-L	#6 AWG	#10	0.63	0.46	0.81	0.08	2.15	Blue	P24	7	24	7/8	50
LCD6-10B-L		#10	0.75	0.46	0.81	0.08	2.27	Blue	P24	7	24	7/8	50
LCD6-10D-L		#10	1.00	0.46	0.81	0.08	2.52	Blue	P24	7	24	7/8	50
LCD6-14A-L		1/4	0.63	0.48	0.81	0.08	2.24	Blue	P24	7	24	7/8	50
LCD6-14B-L		1/4	0.75	0.48	0.81	0.08	2.36	Blue	P24	7	24	7/8	50
LCD6-14D-L		1/4	1.00	0.48	0.81	0.08	2.61	Blue	P24	7	24	7/8	50
LCD6-56D-L		5/16	1.00	0.56	0.81	0.07	2.73	Blue	P24	7	24	7/8	50
LCD6-38D-L	#4 – #3 AWG STR, #2 AWG SOL	3/8	1.00	0.62	0.81	0.06	2.83	Blue	P24	7	24	7/8	50
LCD4-10A-L		#10	0.63	0.55	0.81	0.09	2.17	Gray	P29	8	29	7/8	50
LCD4-10B-L		#10	0.75	0.55	0.81	0.09	2.29	Gray	P29	8	29	7/8	50
LCD4-14A-L		1/4	0.63	0.55	0.81	0.09	2.26	Gray	P29	8	29	7/8	50
LCD4-14B-L		1/4	0.75	0.55	0.81	0.09	2.38	Gray	P29	8	29	7/8	50
LCD4-14D-L		1/4	1.00	0.55	0.81	0.09	2.63	Gray	P29	8	29	7/8	50
LCD4-38D-L		3/8	1.00	0.62	0.81	0.08	2.85	Gray	P29	8	29	7/8	50

‡Visit www.panduit.com/tools for tool and die information.

*Not tested to NEBS Level 3 requirements.

**Consult cable manufacturer for voltage stress relief instructions with applications greater than 2000 V.

Continues on next page